

HEADLIGHT CLEANER SYSTEM OPERATION

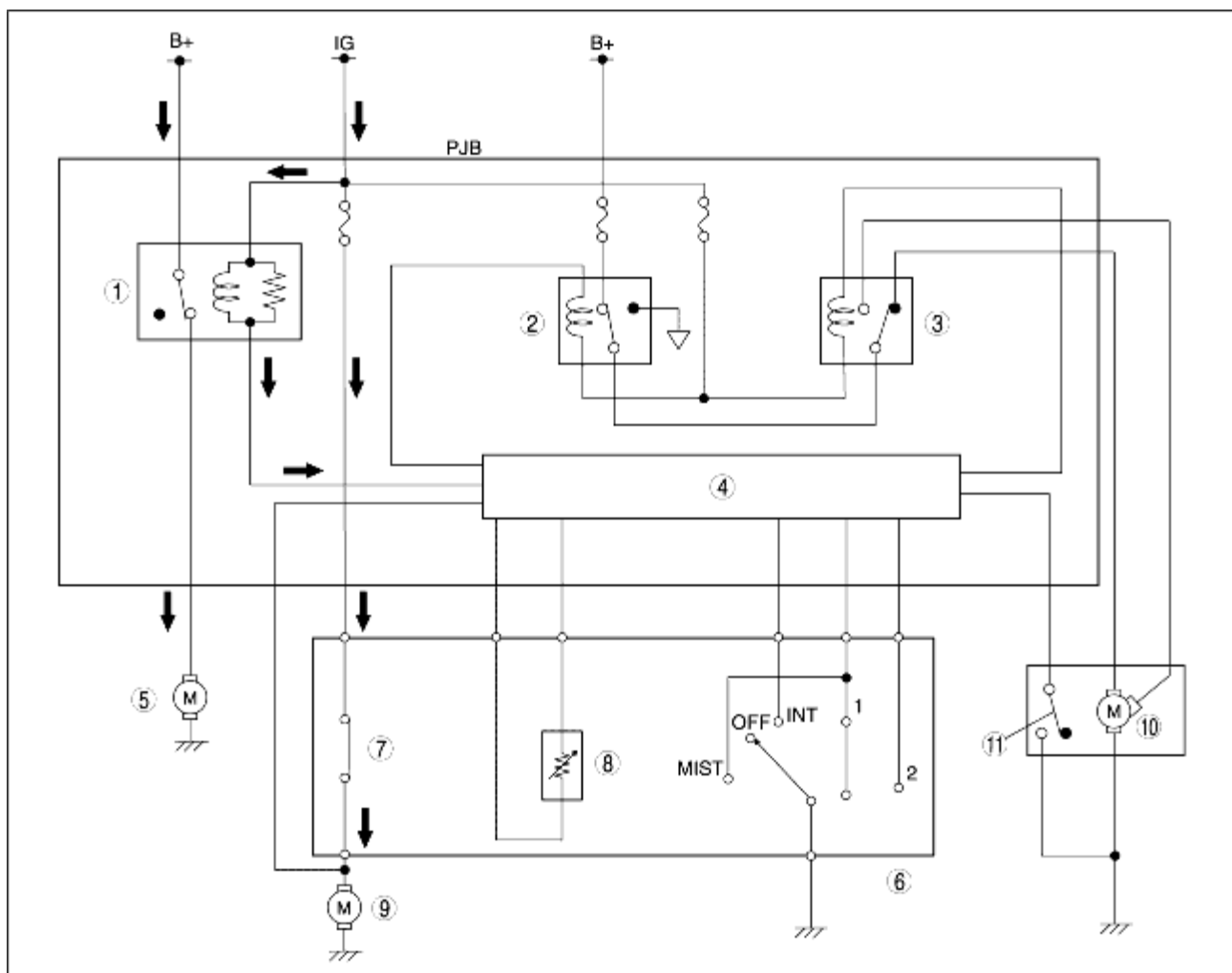
B3E091901052T17

Auto-operation

- If the windshield washer switch is turned on when the ignition and headlight switches are at the ON position, the headlight cleaner motor operates.
- The headlight cleaner operates only one time for every five times the windshield washer switch is operated.
- If manual operation occurs within two to five times of the windshield washer switch being operated, the number count is reset. Also, if the headlight switch is turned to the OFF and then to the ON position, the count is reset when the windshield washer switch is turned on.

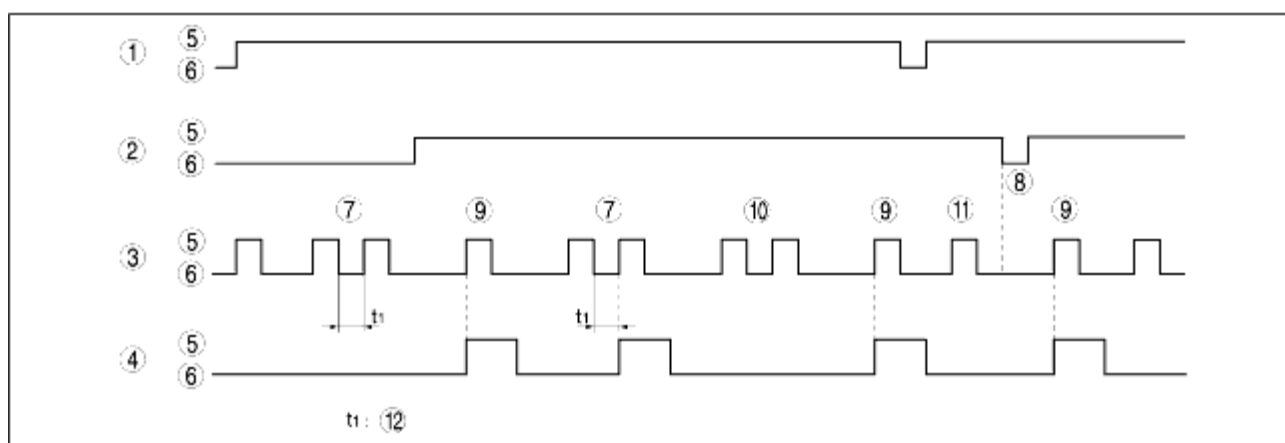
Manual Operation

- If the windshield washer switch is turned on two consecutive times when the ignition and headlight switches are at the ON position, the headlight cleaner motor operates.



B3E0919T116

1	Headlight cleaner relay
2	Windshield wiper relay
3	Windshield wiper HI relay
4	Microcomputer
5	Headlight cleaner motor
6	Windshield wiper and washer switch
7	Windshield washer switch
8	INT volume
9	Windshield washer motor
10	Windshield wiper motor
11	Auto-stop switch



BHE09 19T 109

1	Ignition
2	Headlight switch
3	Windshield washer switch
4	Headlight cleaner relay
5	ON
6	OFF
7	Double click (Reset)
8	Reset
9	1ST
10	2ND-5TH
11	2ND
12	1 s or Less